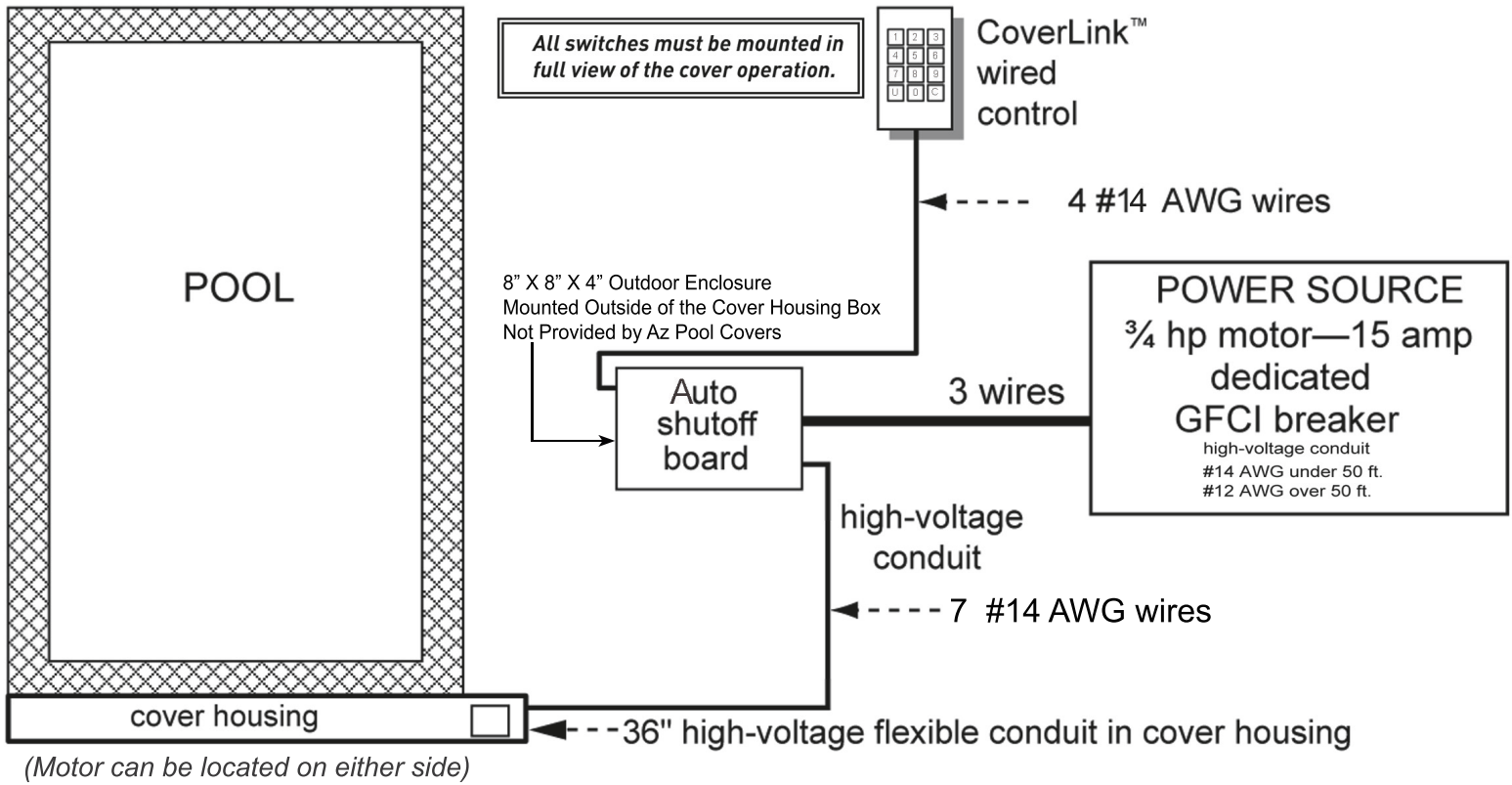
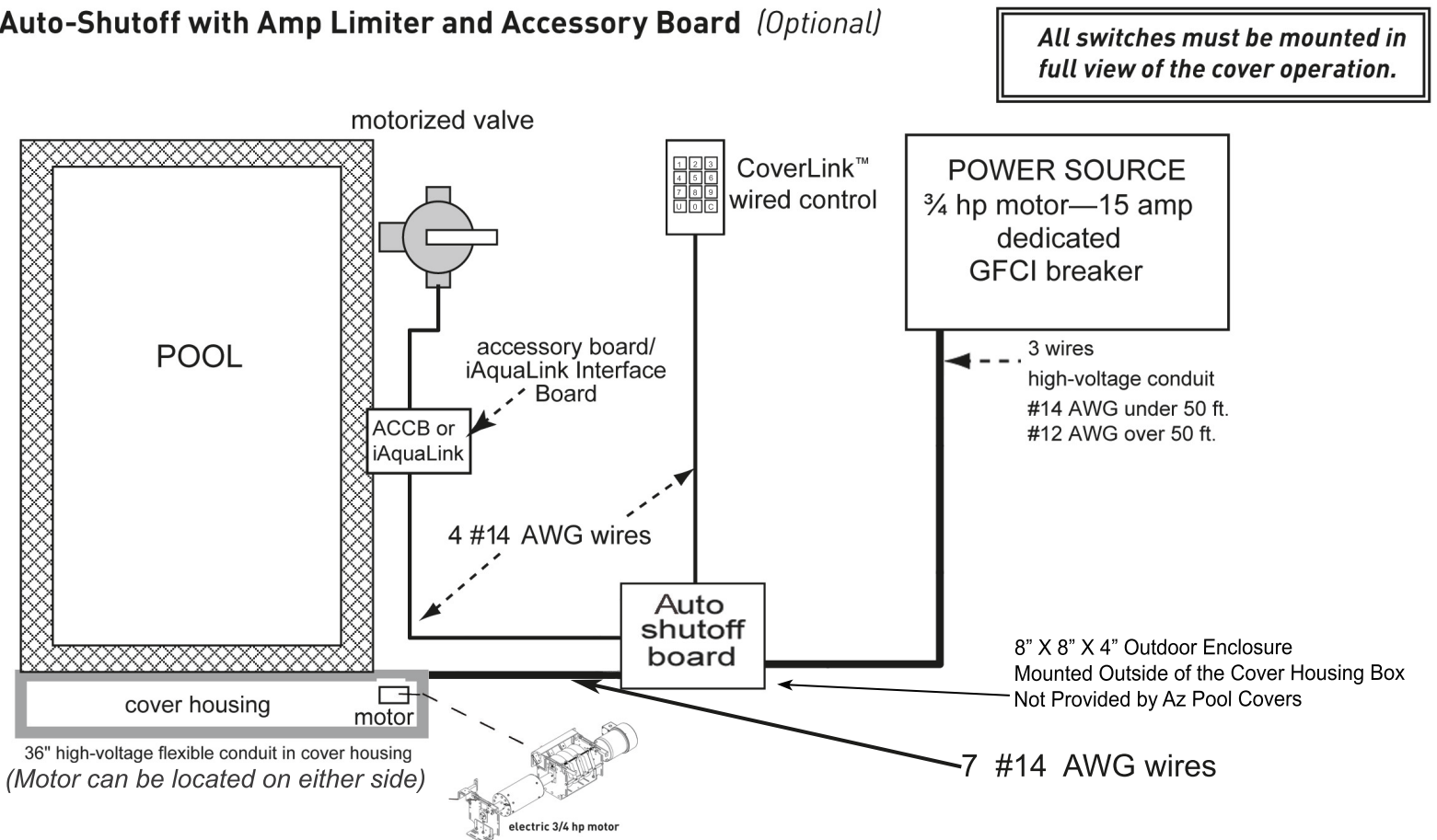


ELECTRICAL

Auto-Shutoff with Amp Limiter (Standard Equipment)



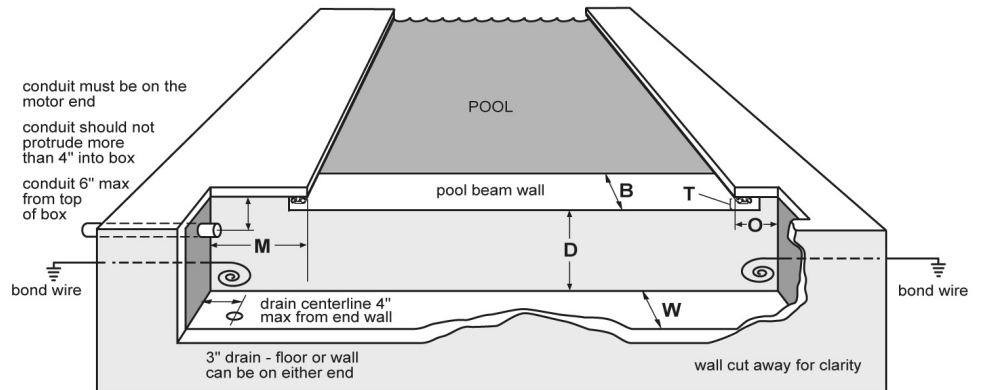
Auto-Shutoff with Amp Limiter and Accessory Board (Optional)



MECHANISM HOUSING

Recessed Concrete—Underside™ Track

Wired Touch Pad and Auto-Shutoff need one 3/4" conduit.



Underside Track Box Dimensions	MOTOR M	OPPOSITE O	BEAM B	THROAT T	DEPTH D	WIDTH W
Pools up to 65 ft long	32"	10"	8-12"	2" min to finished beam	14½"	14½"
Pools over 65 ft. long or 25 ft. wide and vanishing-edge pools—Call Arizona Pool Covers 480-829-00						

Recessed Concrete - Underside™ Track - Autosave™

Underside Track Box Dimensions for Autosave™	MOTOR M	OPPOSITE O	BEAM B	THROAT T	DEPTH D	WIDTH W
Up to 13' or 200 square feet	9" min	9" min	10" min	2" min to finished beam	9" min	12-1/2" min
Auto-shutoff units may require an additional 5-1/2" space on the motor side.						

Note: Make sure you plan accordingly so your conduit does not interfere. For example, if the Autosave motor is below the mechanism, route the conduit behind the mechanism; if the motor is behind the mechanism, route the conduit underneath the mechanism.

Box Side View—Underside Track

